

## Parameters

Misouri INVER-P AIR	Air 20	Air 30	Air 40	Air 50	Air 60	Air 70T
Advised Pool Volume(m³)	25~50	30~70	40~80	50~95	65~120	90~170
Function	Heating✔			Cooling✔		
Operating Air Temperature (°C)	-10~43					
Performance Condition (Air 27°C/Water 26°C/Humid. 80%)						
Heating Capacity(kW)	2.4~9.1	2.5~12.2	3.2~20.0	3.9~20.0	5.5~24.3	7.1~28.3
Heating Capacity(Btu)	8160~30940	8500~41480	10880~55420	13260~68000	18700~82620	24140~96220
Consumed Power (kW)	0.17~1.42	0.18~1.93	0.23~2.58	0.28~3.23	0.40~3.92	0.52~4.42
COP	14.1~6.4	14.0~6.3	14.0~6.3	13.9~6.2	13.8~6.2	13.7~6.4
Performance Condition (Air 15°C/Water 26°C/Humid. 70%)						
Heating Capacity(kW)	1.6~7.2	2.1~9.2	2.4~12.6	2.6~14.4	4.3~18.8	5.0~21.0
Heating Capacity(Btu)	5440~24480	7140~31280	8160~42840	8840~48960	14320~63920	17000~71400
Consumed Power(kW)	0.22~1.53	0.30~1.96	0.34~2.73	0.37~3.13	0.61~4.00	0.70~4.38
COP	7.3~4.7	7.0~4.7	7.1~4.6	7.0~4.6	7.0~4.7	7.1~4.8
Technical Specifications						
Power Supply	230V~/1Ph/50Hz					380V~/1Ph/50Hz
Casing Type	Galvanized steel					
Fan Motor	DC Stepless Motor					
Compressor Brand	Gree Rotary/Inverter				Panasonic Rotary/Inverter	
Water Connection (mm)	50					
Fan Quantity	1					
Fan Speed (RPM)	400-800					
Compressor Quantity	1					
Sound Pressure 1m dB(A)	39-49	40-50	41-52	42-53	43-54	45-55
Advised Water Flow Volume (m³/h)	3.8	5.2	7.1	8.0	9.3	10.2
Water Pressure Drop (max) kPa	2.5	3.5	5	8	10.5	12.5

The data above is for reference only. For model specifications, please refer to the nameplate on the unit.

ANHUI MISOURI ECO-ENERGY SOLUTION CO.,LTD.

+86-20-39067688

sales@misouri.com.cn

www.misouri.com.cn



Website



LinkedIn

**Misouri**  
Better to be different than better

**INVER-HEAT**

## INVER-P AIR

Full DC Inverter Pool Heat Pump

- EPP Air Guide Structure Design
- 39 dB (A) Quiet Operation
- Unique Shell Smooth Line Design
- Two Gas Solutions——R32 & R410A
- Operating Temperature from -10°C to 43°C

CE

R32

R410A





### ① Cabinet

The cabinet has a smooth line design and unique shape. Low-key and full of technological sense, it gives people a refreshing feeling.

### ② Front Panel

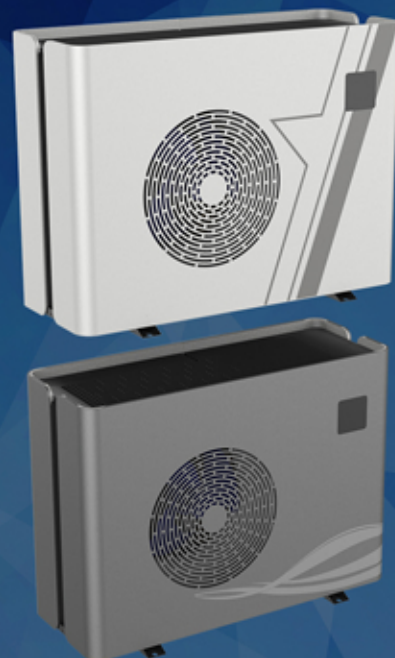
There is not a single screw on the front of the fuselage. This innovative integrated screwless body design makes the whole machine look very harmonious and refreshes the industrial aesthetics of the heat pump.

### ③ Fan Cover

The application of the built-in high-strength fan cover can play a good role in protection.

### ④ Two-color Spray Customization

In order to meet various appearance needs, Missouri brings unique customization, i.e. two-color spray customization, providing customers with an exclusive appearance t in the market.



## Self-developed Driver Board & Full Inverter Technology

The full inverter heat pumps adopts both Missouri self-developed driver boards and variable speed compressors. Unlike traditional single-speed compressor models, the units adjust frequency of the compressor. That is to say, the operating speed of the inverter compressor and fan motor will be adjusted according to the heating demand. In general, with the self-developed driver board and full inverter technology, the heat pumps are capable of running more safely, stably and efficiently.

With its help, the operation of this heat pump becomes more stable and safer.



## Two Gas Solutions—R32 & R410A

To meet different market demands, this product offers two types of refrigerants including R32 and R410A, that means you can cover all market with only one series.



## Wind Guide and Noise Reduction

Not only the wind guide rings adopt the EPP environmental protection material with excellent performance, which can be recycled, but also the heat pumps utilize advanced noise reduction materials to reduce noise. In the normal operating mode, the sound they emit can be as low as 40 decibels. On one hand, this reflects the concept of environmental protection of Missouri; on the other hand, it gives users comfortable experience.

low noise level down to

# 39 dB(A)

at 1 meter

## Smart App Control

Following the trend of smart control, Missouri designs a pool heater App, allowing users to remotely turn on/off the heat pump, set pool water temperature, and check energy consumption curve during the week. An easy click can bring you a relaxing swim at the moment you arrive at home.



Handy Heat Pump

